

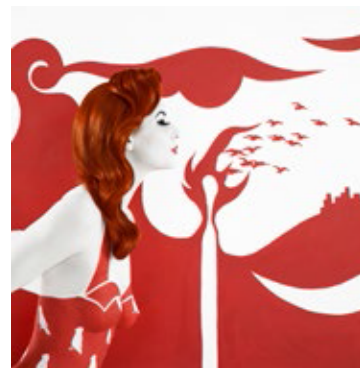
# EMMA HACK



The Geisha  
Size: 110x110m  
Media: Type C Photographic print



Hydrangea Cradled Owl  
Size: 110x110m  
Media: Type C Photographic print



Redhead  
Size: 110x110m  
Media: Type C Photographic print

Emma Hack is an Adelaide-based artist working in the unique medium of body paint installation and photography. Exhibiting extensively throughout Australia since 1999, Emma's astounding artworks have since captured the attention of collectors and art lovers worldwide.

Emma Hack's collaboration with Grammy award winning musician Gotye resulted in the iconic, award winning music video for Somebody That I Used to Know, which has been viewed by over 420 million people worldwide, raising her profile in the US, UK and Europe. Emma has since worked on major artistic commissions for Motor Accident Commission, South Australia, where she built a sculpture of 17 bodies, painted as a crashed car, again drawing worldwide attention to her craft. Emma most recently created a commission for WA Ballet, utilising the form of 21 Ballet dancers to create their upcoming program imagery, in October, Emma will creative direct the Ballet that will launch the program, furthering her reach and skill within the arts.

In 2013 Emma Hack held successful shows In Hong Kong, Singaporea, Brussels, Aspen, The Hamptons and Milan. Emma has received great acclaim for her refined body paint camouflage technique; through a combination of painting on canvas, body painting and studio-based photography, her work evokes a rich array of visual narrative and magical realism.

Best known for her Wallpaper series (2005-2010)- in which she painstakingly camouflaged the human form by hand painting her models into the remarkable designs of the late Florence Broadhurst- Emma Hack's diverse artwork collections draw inspiration from the unique Australian flora and fauna, as well as Oriental influences. Her work is held in numerous private and corporate collections globally.

## ARTIST STATEMENT

My art-works symbolise femininity and strength and being 'at one' with nature and our environment through the eye-catching art of painting my muse into wallpaper design and hand painted canvas.

I create my art works over 8-15 hours as my model stands in front of my hand painted canvas or Florence Broadhurst Wallpaper designs in the past. The camera is set up approximately 5 metres from the model and is my main viewpoint and reference for the 'blend'. I start at the shoulders and use them as my first reference. I then follow down the arms and interior torso, finishing on the face. I don't use projection or stencils as I work completely freehand, I prefer this result due to the artwork retaining its own quirks and feel, it creates movement on the body, rather than a very flat look. There is minimal retouching, you can see the paint strokes and slight cracking from movement, which I really love and proves the artwork genuine.